



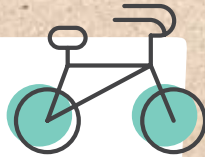
HOUSE OF COMMONS  
CHAMBRE DES COMMUNES  
CANADA

# SOPHIE CHATEL

## MEMBER OF PARLIAMENT OF PONTIAC



### Hello Cantley!



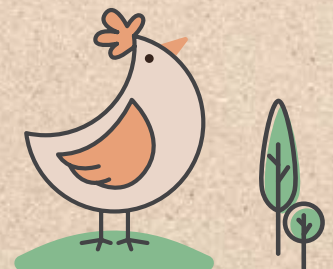
On a Sunday in July, I set off on my electric bike, with my team of volunteers, on a series of door-to-door visits in Cantley to meet with residents of my riding. The subjects most frequently raised were the environment in all its forms, inflation, the cost of living and healthcare.



**Sébastien strongly advocates for investing in the circular economy, a sustainable model that promotes reusing resources and reduces.**

He strongly believes that we waste should review our consumption model. It's an opportunity to build a greener and more prosperous future. I completely agree with you, Sébastien!

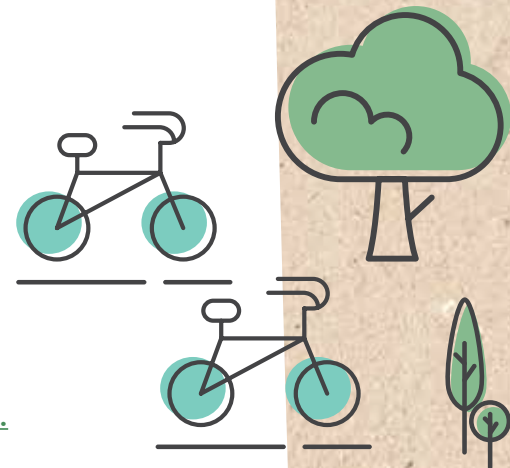
**I met Guy while he was feeding his chickens.** For Guy and many other residents of Cantley, without actions to protect the environment, we will have neither health, safety, or prosperity. That is why I launched a large-scale collaborative project involving the Kitigan Zibi Indigenous community, the MRCs of Outaouais, government ministries, and organizations to protect nature and meet in the Outaouais our COP15 targets to halt and reverse nature loss. While we take local action, our government has introduced over 100 measures to support climate action and achieve our goal of reducing greenhouse gas emissions by 40 to 45% by 2030. We have also made significant investments in clean technologies such as electric vehicles and batteries and implemented a carbon price to stimulate green economy and innovation. Although our emissions are decreasing, I agree with Guy that additional efforts will be necessary to achieve our ambitious climate targets.





**Anne and Alain**, avid cyclists, have a lot to say about the deteriorating environment due to urban sprawl.

They highlight the issues of heavy traffic and noise pollution. As part of the project that I initiated "For a Green and Prosperous Outaouais", we have engaged in a broad dialogue with citizens on intermodal and connected transportation for efficient travel (see <https://outaouaisvert.cocoriko.org/>). We will also develop a roadmap with concrete actions we can take together to ensure a healthy environment for all.



**Louise**, a retiree, is compelled to work part-time to make ends meet due to inflation. Elevated inflation is a burden on Canadians, especially for the most vulnerable.

That is why our government has indexed public pensions, introduced a dental care program, and provided targeted benefits for grocery and housing for those in need. The very good news is that our monetary policies work: inflation has finally fallen into the Bank of Canada's target range (between 2% and 3%) in June. Inflation went from a peak of 8.1% last summer to 2.8% in June. But inflationary pressures are proving persistent, and they keep interest rates high.



Thanks for sharing your concerns and feel free to contact me at:  
[sophie.chatel@parl.gc.ca](mailto:sophie.chatel@parl.gc.ca).

**BUREAU CAMPBELL'S BAY**  
110, rue Front  
Campbell's Bay (QC) J0X 1K0  
819 648-2138

**BUREAU MANIWAKI**  
14, rue Comeau porte E  
Maniwaki (QC) J9E 2R8  
819 441-7099

